

# Hb Hope

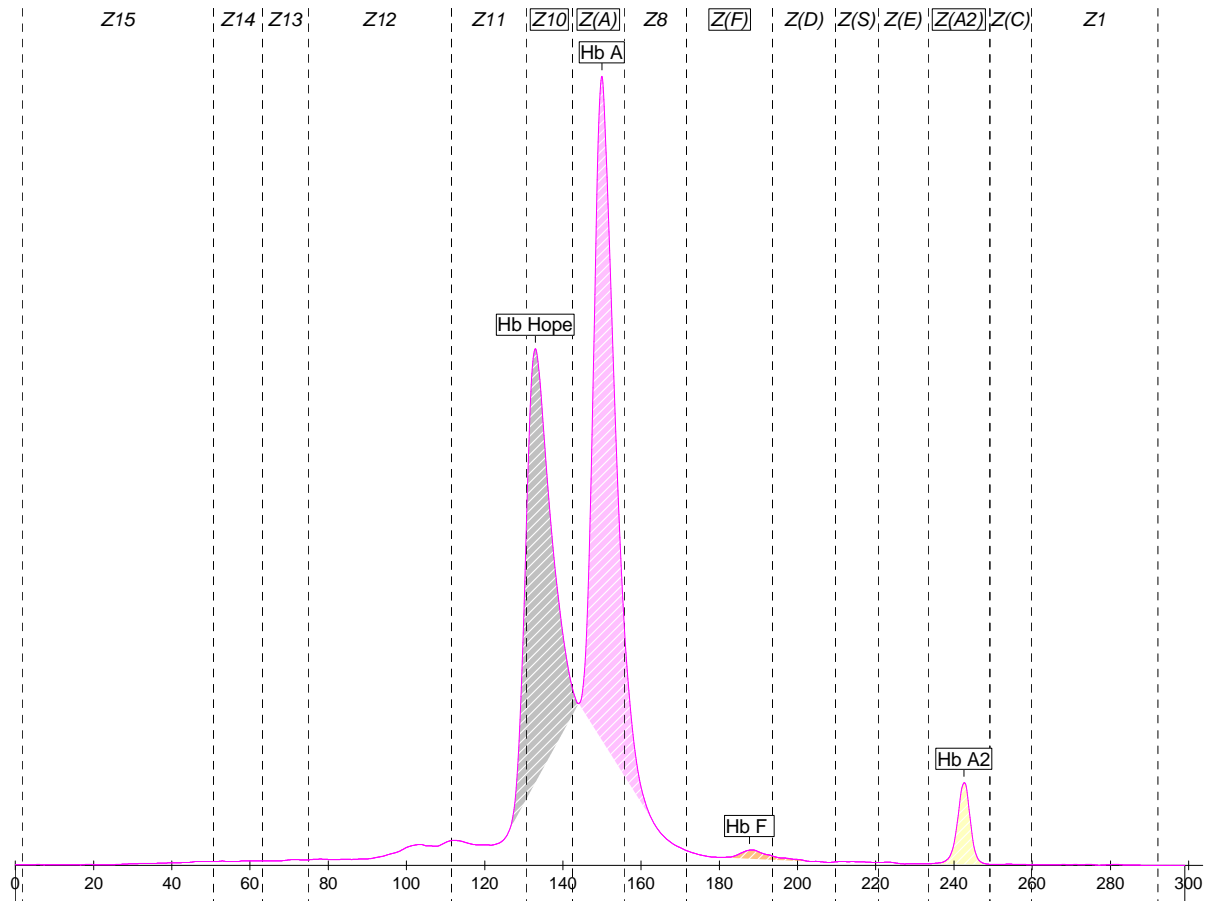
Globin chain(s) involved: **Beta**

Status: **Heterozygous**

Migration in zone(s): **Z10**

Migration in position(s): **133**

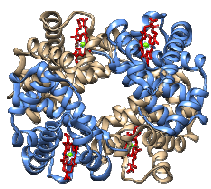
*Peak position may vary +/- 1*



## Capillary Electrophoresis

Fractions	Value %
Hb Hope	40,6
Hb A	54,2
Hb F	1,0
Hb A2	4,2

**Comments on this profile:** Hb A2 is overestimated due to loss of integration of Hb A and Hb Hope. It is recommended to delete the automatic quantification of both peaks and then quantify them together manually.



# Hb Hope

## Mutation data

Status:	Heterozygous
<b>Hb Hope</b>	
Mutation	Beta 136(H14) Gly>Asp
Nomenclature	HBB:c.410G>A
In combination with:	
Mutation	
Nomenclature	

### Comments:

## Hematology

Hematological parameters	Results
RBC	Low
Hemoglobin	Low
Hematocrit	
MCV	

Hematological parameters	Results
MCH	
Blood smear	
Serum iron and ferritin	

<b>Comments on hematology:</b>	Hemolysis
--------------------------------	-----------

## Other information

<b>Clinical context:</b>	
Clinical presentation	Mild anemia symptoms
Genetic risk	Could generate intermediate or severe hemolysis in combination with Beta-thalassemia and other conditions
Advice	Partner and family analysis
<b>About this variant:</b>	
Stability	Normal
Oxygen affinity	Decreased
Found in	Several Black families, in Japanese, Thai, Laotian, and Cuban families

### Comments:

**References:** Hubbard M. et al., Acta Haematol. 1975;54(1):53-8.  
 Moo-Penn W. et al., Am J Clin Pathol. 1975 Jan;63(1):87-90.  
 Steinberg MH. et al., J Lab Clin Med. 1976 Jul;88(1):125-31.