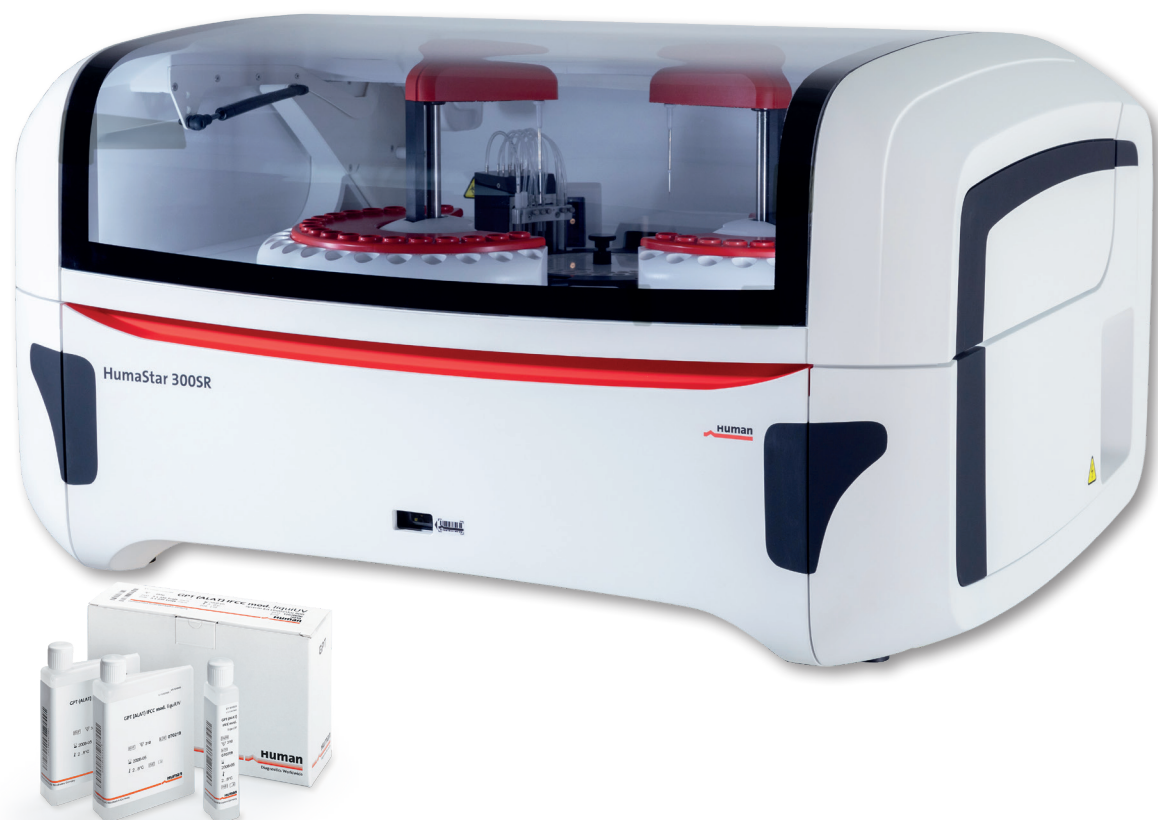


HumaStar 300SR

Primed for precision, built for performance

- › Perfect matching of hardware, software, reagents, and controls for maximum performance
- › Intuitive and powerful, designed for easy and efficient operation
- › Comprehensive assay selection, fully validated and “Made in Germany”

NG
NEXT GENERATION
PRIMED FOR PRECISION
BUILT FOR PERFORMANCE



Human

Diagnostics Worldwide

HumaStar 300SR

Plug and run – Your choice for system solutions



Video



- > Advanced cuvette wash station for improved performance and lower failure rate
- > Upgraded pipetting unit delivers higher precision for low volumes and improved repeatability
- > V-shaped low-volume reaction cuvettes save reagents and operating costs
- > Integrated 2D barcode scanner enables effortless import of QC and calibration target values
- > New software streamlines workflows for seamless operation
- > 3-color LED status illumination offers intuitive and easy monitoring
- > Clot detection enhances accuracy and reliability

HumaStar 300SR

REF 16930

Medium throughput random access system

- > Up to 300 tests per hour
- > Flexibility through three open channels for user-defined methods
- > 40 cooled positions for reagents and solutions
- > Uninterrupted operation with continuous programming and loading
- > 60 sample positions for primary tubes and sample cups
- > Convenient sample and reagent management with barcode reader for samples and reagents
- > Efficient data management with LIS via ethernet, ASTM protocol, bidirectional
- > Reliable performance ensured by included UPS

Designed to simplify your daily work

- > Improved multi-step cuvette wash station guarantees flawless reaction conditions
- > Up to 56 days reagent onboard stability
- > Optimized performance through method-specific wash options, ensuring precise results
- > Pre and post-dilution processes enhance efficiency for extended walk-away time
- > Clot detection and liquid level sensor prevent interruptions
- > Bottle cap holder to prevent mix-ups and save time
- > Maintenance is fast, user-friendly, and service-efficient

Eco- friendly

- > Dual solution wash station minimizes carry-over
- > Low water consumption – less than 3 l/h
- > Separation and reduction of biohazard waste

Intuitive and powerful software

- > Offers an enhanced user experience, designed for intuitive touchscreen interaction
- > Ensures accountability with full traceability of reagents, calibrations, users, and settings
- > Provides easy access to information through a searchable results database
- > Maintains consistent accuracy with onboard calibration and stability monitoring
- > Features automatic outlier detection and unit conversion for enhanced data integrity

Customer focused reagent concept

- > Ready for direct use with plug-and-run reagents with prefilled and barcoded reagent bottles
- > Ensures highest quality results with fully validated assay settings
- > Meets various throughput needs with two kit sizes
- > Offers enduring reliability with up to 56 days of onboard stability
- > Compatible with HumaStar 300SR and HumaStar 600

Consistent quality “Made in Germany”

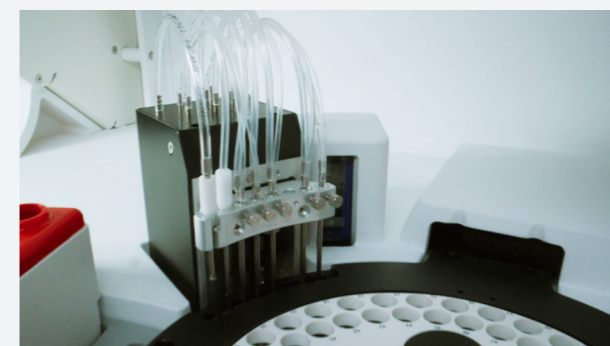
- > In Magdeburg, Germany, we produce our reagents in accordance with the latest quality standards, guaranteeing consistent quality at the highest level.



3-color LED status illumination



Upgraded pipetting unit



Improved wash station and sample barcode reader



Convenient reagent management with barcode reader

HumaStar 300SR

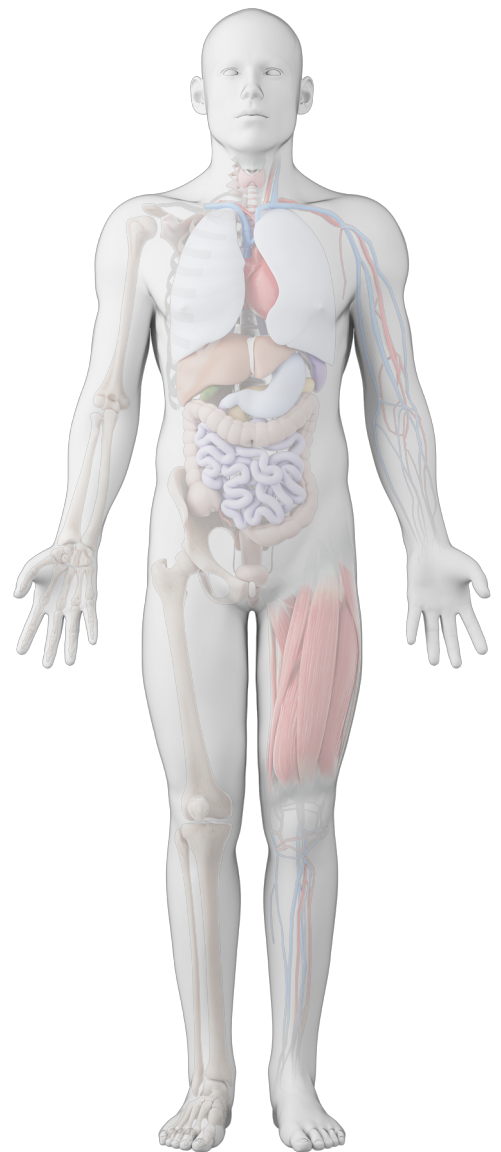
Comprehensive assay selection “Made in Germany”

System reagents for HumaStar 300SR and 600

- > Plug and run with filled in barcoded reagent containers
- > Ready-to-use and available in two kit sizes
- > Long shelf life, open vial and onboard stability



Immune Status	anti-Streptolysin-O, Complement C3 and C4, CRP, Immunoglobulins IgA, IgG, IgM
Arteriosclerosis	Cholesterol, HDL-Cholesterol,
Cardiac Risk Assessment	Triglycerides
Cardiac Panel	CK-NAC, CK-MB, GOT (ASAT), GPT (ALAT), LDH
Liver Panel	Albumin, Alkaline Phosphatase, Bilirubin Total and Direct, Cholinesterase, gamma-GT, GOT (ASAT), GPT (ALAT), Total Protein
Kidney Panel	Calcium, Creatinine, Inorganic Phosphorus, Magnesium, Microalbumin, Potassium, Sodium, Urea/BUN, Uric Acid, Urinary Total Protein
Pancreatic Tests	alpha-Amylase, Lipase, Pancreatic Amylase
Diabetes	Glucose, HbA1c, Microalbumin, Triglycerides, Urinary Total Protein
Bone Metabolism	Alkaline Phosphatase, Calcium, Inorganic Phosphorus, Magnesium
Rheumatic Diseases	anti-Streptolysin-O, Complement C3 and C4, CRP, Rheumatoid Factors
Anemia	Iron, Transferrin
Water & Electrolyte Balance	Albumin, Chloride, Potassium, Sodium, Total Protein



Human

Diagnostics Worldwide



HUMAN Gesellschaft für Biochemica und Diagnostica mbH
Max-Planck-Ring 21 · 65205 Wiesbaden · Germany
Tel. +49 6122-9988-0 · Fax +49 6122-9988-100 · e-mail: human@human.de · www.human.de