

HumaStar 200

Primed for precision, built for performance

- › Reliable and cost-effective - the perfect choice for aspiring labs
- › Intuitive and powerful, designed for easy and efficient operation
- › Enhanced performance to simplify your daily routine

NG
NEXT GENERATION

PRIMED FOR PRECISION
BUILT FOR PERFORMANCE



Human

Diagnostics Worldwide

HumaStar 200

The perfect choice for aspiring labs



- > **Advanced cuvette wash station** for improved performance and lower failure rate
- > **Upgraded pipetting unit** delivers higher precision for low volumes and improved repeatability
- > **V-shaped low-volume reaction cuvettes** save reagents and operating costs
- > **Integrated 2D barcode scanner** enables effortless import of QC and calibration target values
- > **New software** streamlines workflows for seamless operation

HumaStar 200

REF 16895

Medium throughput random access analyzer

- > Up to 200 tests per hour
- > Random-access and STAT
- > 80 advanced low volume reaction cuvettes
- > Multi-step cuvette wash station with method defined programmes
- > 60 sample positions for primary tubes and sample cups
- > 30 reagent positions for 20 ml and 50 ml bottles
- > Capacitive liquid level detector
- > Needle shock detector
- > Liquid containers with level monitoring
- > Efficient data management with LIS via ethernet, ASTM protocol, bidirectional
- > Uninterruptible Power Supply (UPS) 230V included
- > Multi-language software: English, French, Spanish

Designed for easy and efficient operation

- > Continuous reagent cooling independent from main power switch
- > Automated pre and post-dilution processes enhance efficiency for extended walk-away time
- > Convenient reagent management with removable reagent tray and the choice of 50 ml or 20 ml bottles
- > Versatile sample handling with the choice of three different removable sample trays
- > Internal sample barcode reader
- > Up to 8 calibrators per method with automatic pre-dilution
- > Minimal water and energy consumption
- > Printing on Windows compatible printer

Powerful and easy to use software

- > Software designed for touchscreen operation with smart graphical user interface
- > Programmable automatic start up routine and multiple work lists
- > Method and reagent monitor (volumes, available tests, calibration, QC status)
- > Continuous loading of samples and reagents
- > Free choice of execution order
- > Results archive with cumulative charts

Safety first with smart system monitoring

- > Intelligent flagging system and extensive error log
- > Lifecycle counter for components with maintenance alerts ensuring consistent performance
- > Two types of systemic and special washing solution
- > Routine checks and individual cuvette blanking
- > Programmable validity limits for methods and reactions
- > Reagent integrity check



QC options

- > Levey-Jennings plots and Westgard multi rules
- > Up to 3 QC levels per test
- > Real-time QC monitoring with detailed reporting
- > Method statistics: including test counter, CV%, mean, graphical trend analysis

Broad assay panel "Made in Germany"

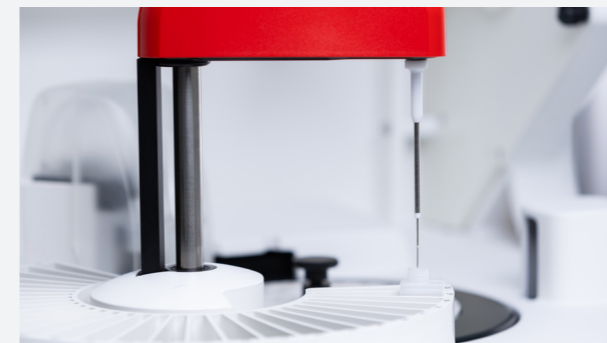
- > Optimized for the use with HUMAN analyzers
- > Meets various throughput needs with multiple kit sizes
- > Consistent quality "Made in Germany" produced in accordance with the latest quality standards



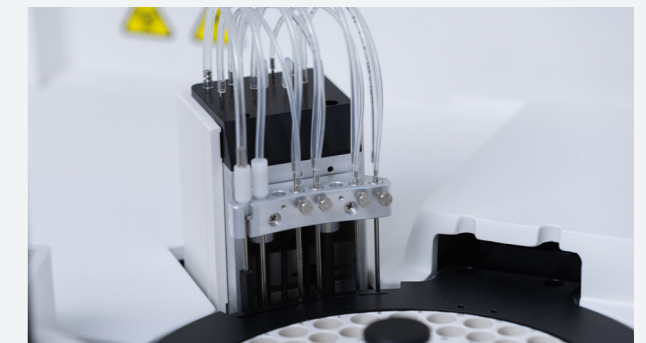
Powerful and easy to use software



V-shaped low-volume reaction cuvettes



Upgraded pipetting unit



Advanced wash station

HumaStar 200

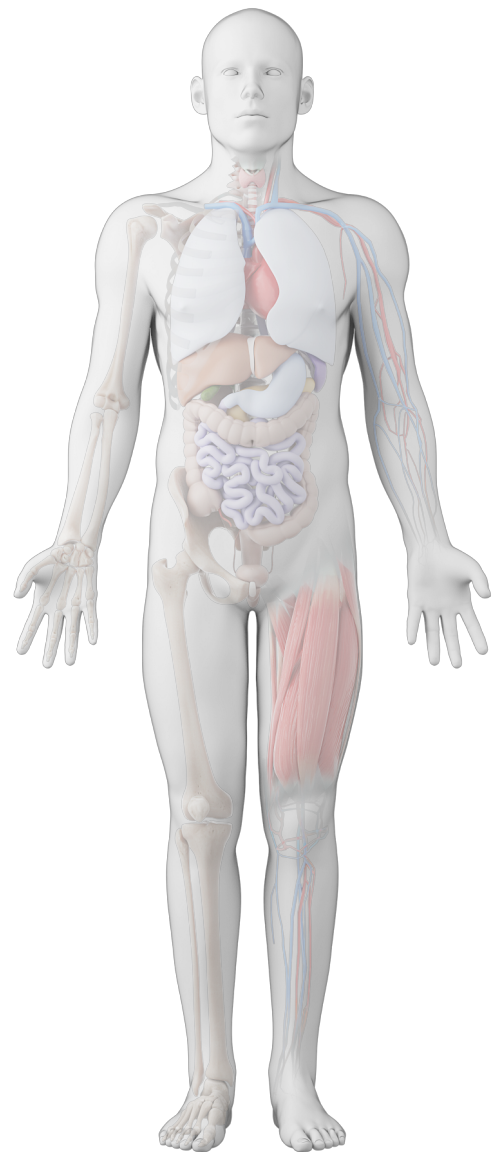
Broad Assay Panel - Made in Germany

Multipurpose reagents

- > Ready-to-use and liquid stable
- > Meets various throughput needs with multiple kit sizes
- > Validated applications and settings for HUMAN analyzers



| | |
|--|---|
| Immune Status | anti-Streptolysin-O, Complement C3 and C4, CRP, Immunoglobulins IgA, IgG, IgM |
| Arteriosclerosis | Cholesterol, HDL-/LDL-Cholesterol, |
| Cardiac Risk Assessment | Triglycerides |
| Cardiac Panel | CK-NAC, CK-MB, GOT (ASAT), GPT (ALAT), Homocysteine, LDH |
| Liver Panel | Albumin, Alkaline Phosphatase, Bilirubin Total and Direct, Cholinesterase, gamma-GT, GOT (ASAT), GPT (ALAT), Total Protein |
| Kidney Panel | Calcium, Creatinine, Cystatin-C, Inorganic Phosphorus, Magnesium, Microalbumin, Potassium, Sodium, Urea/BUN, Uric Acid, Urinary Total Protein |
| Pancreatic Tests | alpha-Amylase, Lipase, Pancreatic Amylase |
| Diabetes | Glucose, HbA1c, Microalbumin, Triglycerides, Urinary Total Protein |
| Bone Metabolism | Alkaline Phosphatase, Calcium, Inorganic Phosphorus, Magnesium |
| Rheumatic Diseases | anti-Streptolysin-O, Complement C3 and C4, CRP, Rheumatoid Factors |
| Anemia | Iron, Total Iron Binding Capacity, Transferrin |
| Water & Electrolyte Balance | Albumin, Chloride, Potassium, Sodium, Total Protein |



Human

Diagnostics Worldwide



HUMAN Gesellschaft für Biochemica und Diagnostica mbH
Max-Planck-Ring 21 · 65205 Wiesbaden · Germany
Tel. +49 6122-9988-0 · Fax +49 6122-9988-100 · e-mail: human@human.de · www.human.de